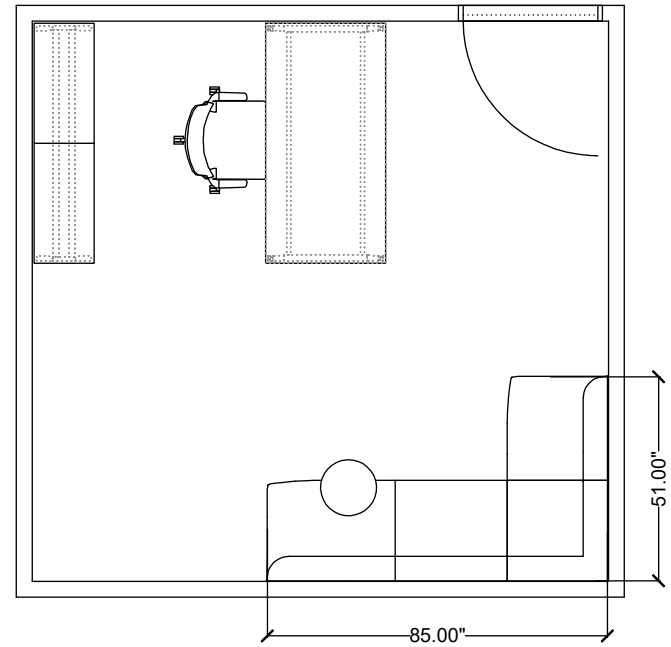


# stylex

## LUNA 11



Materials priced in Grade B Fabric. This specification is for budget purposes and reflects list pricing.

# stylex

## LUNA 11

LINE	PART NUMBER	PART DESCRIPTION	QTY	LIST	EXT. LIST
1	F262	F4 Standard Height, Med Back, Mesh Back, Uph Seat, Arm	1	\$1,463.00	\$1,463.00
2	FA5D3060	Free Address, Table, 29in Desk Height, 30D x 60W	1	\$2,394.00	\$2,394.00
3	FA6L2H29	Free Address, Locker, 29H x 15D x 30W, Double	1	\$2,594.00	\$2,594.00
4	FA6L2H29	Free Address, Locker, 29H x 15D x 30W, Double	1	\$2,594.00	\$2,594.00
5	FA8SD15L60	Free Address, Frame, 15D x 60W	1	\$1,039.00	\$1,039.00
6	LN75	Luna, Tablet Arm, Under Single Swivel	1	\$832.00	\$832.00
7	LNE31L60	Luna, Elevated, Armless End Left, Low Back, 60in Long, Standard Uph	1	\$3,931.00	\$3,931.00
8	LNE42L25	Luna, Elevated, Square Inside Corner, Low Back, Standard Uph	1	\$2,557.00	\$2,557.00
9	LNE32L26	Luna, Elevated, Armless End Right, Low Back, 26in Long, Standard Uph	1	\$2,477.00	\$2,477.00
				<b>Quote Total:</b>	<b>\$19,881.00</b>